

# Budynek 1

## Lokal 2 - 95,53 m<sup>2</sup>

I piętro 63,0 + poddasze 32,53 m<sup>2</sup>

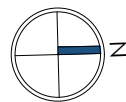
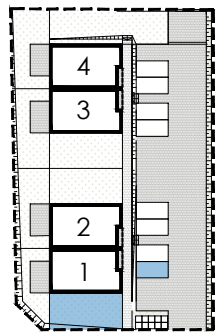
### I piętro

|                   |                      |
|-------------------|----------------------|
| Wiatrołap         | 1,04 m <sup>2</sup>  |
| Schody + Korytarz | 8,72 m <sup>2</sup>  |
| Korytarz          | 3,83 m <sup>2</sup>  |
| Garderoba         | 10,58 m <sup>2</sup> |
| Salon z aneksem   | 26,38 m <sup>2</sup> |
| Pokój             | 8,80 m <sup>2</sup>  |
| Łazienka          | 3,65 m <sup>2</sup>  |

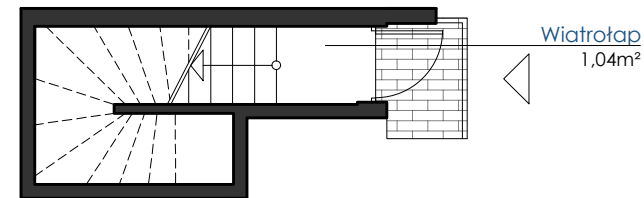
### poddasze

|           |                      |
|-----------|----------------------|
| Schody    | 4,52 m <sup>2</sup>  |
| Garderoba | 28,01 m <sup>2</sup> |

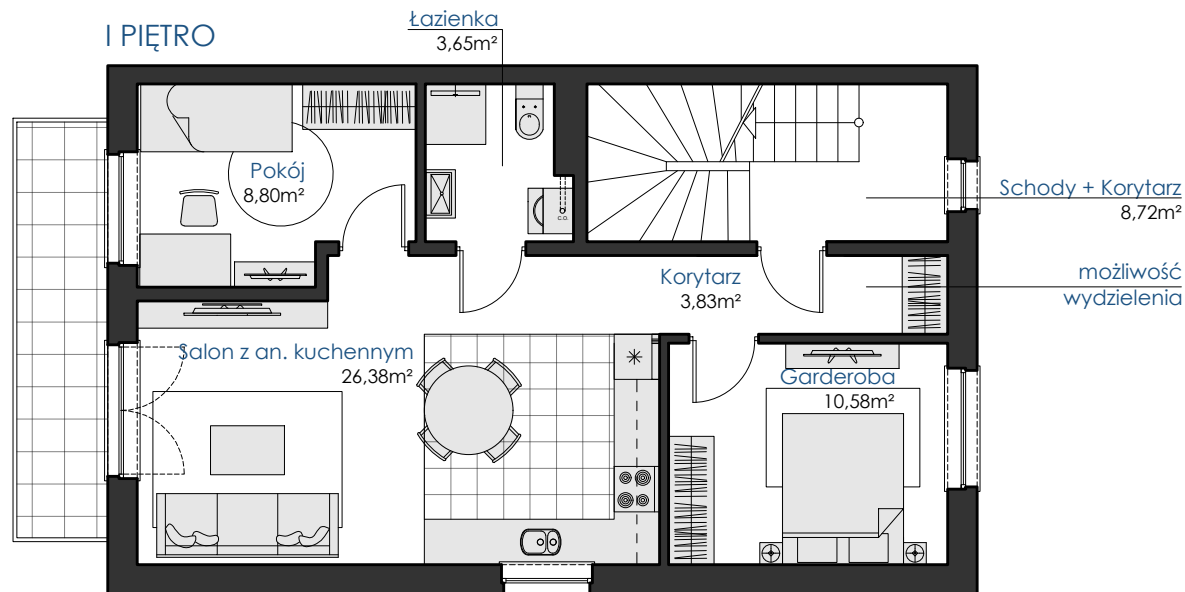
Lokalizacja ogródka i miejsca postojowego



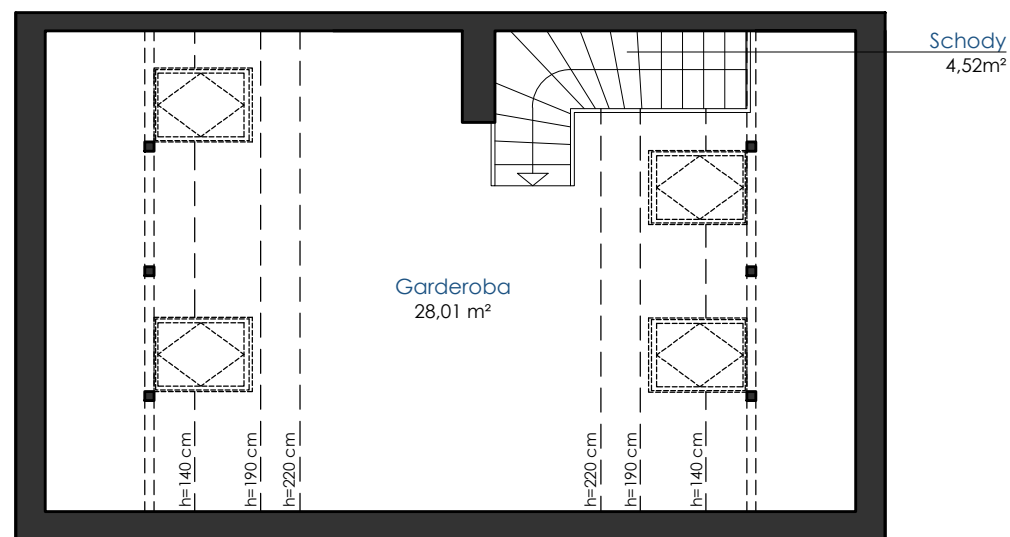
### PARTER



### I PIĘTRO



### PODDASZE



Propozycja aranżacji lokalu

